

Allgäu[®]

Welcome
to Scheidegg



Scheidegg
SCHEFFAU

SUN TERRACE OVERLOOKING LAKE CONSTANCE | 600 – 1,000 m above MSL

Premium-class climatic health resort and premium-class Kneipp health resort in the Allgäu region



Dear Guests,

Roaring waterfalls, stunning views of the surrounding mountains, idyllic cycling and hiking trails, exciting tourist destinations for young and old as well as a beneficial climate – all this and much more besides awaits you here in Scheidegg and the surrounding area.

As one of the sunniest places in Germany as well as a premium-class spa town officially recognised for its healthy climate and Kneipp treatments, our community offers you ideal conditions for a relaxing stay thanks to its prime location between the outskirts of the Alps and Lake Constance. No matter whether you visit us as activity holidaymakers, nature lovers, a family or connoisseurs, everyone finds their idea of a perfect holiday here – in both the summer and the winter. Our cordial hosts as well as numerous restaurants and guesthouses are looking forward to your visit.

Dive into the holiday region of Scheidegg and let yourself be inspired by what's on offer. Please don't hesitate to contact us if you have any questions or require further information. We look forward to welcoming you in person in the near future.

See you soon in Scheidegg!
Your Scheidegg Tourism Team



Scheidegg



Scheffau

TAKE A DEEP BREATH AND RECHARGE YOUR BATTERIES IN SCHEIDEGG

Rolling hills, flowering meadows and to the south, the impressive mountain vista from the Allgäu Alps to Bregenz Forest – Scheidegg is located on a sun-drenched high mountain plateau amidst this idyllic landscape in the western Allgäu region.



WELLNESS HOLIDAY IN A PREMIUM HEALTHY CLIMATE

Scheidegg is one of just 16 places throughout Germany to bear the title "premium-class climatic health resort". This distinction attests to the outstanding quality of our environment and air and acknowledges the measures that we undertake to protect nature.



SCHEFFAU IN THE PICTURESQUE ROTHACH VALLEY

With around 500 inhabitants, Scheffau has been part of the market town of Scheidegg since 1972 and is widely regarded as one of the most beautiful villages in the western Allgäu region. It lies close to the border with Vorarlberg and is an ideal starting point for diverse hiking tours. One destination worth visiting is the 1,095-metre-high Hirschberg, whose peak offers a fantastic panoramic view of Lake Constance and the Alpine foothills.

The unspoiled nature, the typical rural character and the village community with its family atmosphere are what constitute the particular appeal of this idyllic place.

BREATH-TAKING NATURAL SPECTACLE

They form the gateway to the mighty **Rohrach gorge** and are one of the 100 most beautiful geotopes in Bavaria: the **Scheidegg waterfalls**. Here, the Rickenbach's water plummets down over two enormous stone steps in an ear-splitting roar. You can either marvel at the three waterfalls from a viewing point located above them or admire them up close. The wild Rohrach gorge is the biggest nature conservation area in the district of Lindau, and its wetland and litter meadows, springs and rocks are home to numerous rare animals and plants.



ADVENTURES FOR THE WHOLE FAMILY

Numerous exciting hands-on activities for young and old are on offer around Scheidegg's waterfalls: the **geo adventure trail**, which is unique throughout Germany, uses augmented reality at seven interactive stations to explain the history of the waterfalls' development and visualise the geological processes that took place many millions of years ago. Our mascot "Ludwig the alpine salamander" takes children along the **fairy tale trail** through the mountain forest and lets them in on the secrets of this enchanted habitat. And the **interactive geo puzzle** offers a playful opportunity to learn more about the fascinating natural spectacle.



FOREST EXPERIENCES WITH WOW FACTOR

Taking a stroll at treetop level, enjoying spectacular views of the Allgäu Alps and Lake Constance and drinking in the forest cosmos with all of your senses – all of this awaits visitors at the “**skywalk allgäu**” interactive nature park.

Its main attraction is the barrier-free treetop trail, located at heights of between 25 and 40 metres, with its unique suspension bridge construction. It constantly offers new perspectives that allow you to look at the forest in a new way.

BATHING WITH A VIEW OF THE MOUNTAINS

Scheidegg’s Alpine outdoor pool is a real gem: fed by spring water, the natural pool offers a swimming experience akin to being in a mountain lake and enables you to enjoy the magnificent Alpine panorama of the Allgäu region’s three-country border area. Children can splash around in the two heated children’s pools with slides and can have lots of fun on the playground and playing table tennis or beach volleyball. A wonderful experience for young and old!

www.scheidegg.de/alpenfreibad



PLAYFULLY DISCOVER THE FOREST

Once back down on the ground, further attractions are just waiting to be explored: various forest discovery trails offer insights into the local flora and fauna, diverse forest surfaces can be felt on the barefoot trail, and coordination and balance are put to the test on the agility course. A large adventure playground and a petting zoo raise little forest spirits’ pulses, while parents can watch in comfort from the picnic area or the beer garden.

www.skywalk-allgaeu.de

ACTION AND ADVENTURE: HOLIDAY WITH THE FAMILY

Holidaying in Scheidegg and the surrounding area is a real experience: being awoken in the morning by the cockerel crowing on the farm, discovering nature during an exciting hike or finding out how the holes get into the cheese in the alpine dairy.

No matter whether it's raining or the sun is shining, there's lots for our young guests to discover here – there's no chance of their being bored!



LOOK WHAT'S CRAWLING OVER THERE!

Mighty pythons, poisonous cobras, cute geckos, hairy bird-eating spiders or fascinating lizards and crocodiles: at **Scheidegg reptile zoo**, the exotic inhabitants can be marvelled at on a tour through the tropical house in over 60 naturally laid-out terraria or in the outdoor enclosure. A great experience even in poor weather!

THE JOYS OF A PONY FARM

At the **adventure pony farm** in Scheidegg, novices and experienced riders can find happiness on the back of a pony: on a ride through the surrounding area, during a riding lesson on the grounds or on a riding holiday with full board. In the petting zoo, kids can interact with llamas, alpacas, goats, sheep and geese. The adventure playground, the play barn and the child-friendly electric quad bikes are also bags of fun.

HOLIDAY ON THE FARM

Lots of fresh air, nature right outside your door, taking a spin on the tractor or romping around in the hay: holidays on the farm are the ultimate highlight for kids. Experiencing daily life on the farm up close and watching the cows being fed and milked is simply unbelievably exciting. Numerous farms in Scheidegg look forward to offering you accommodation in a family atmosphere.

ENJOY THE ALPINE PANORAMA: LEISURE FACILITIES IN THE REGION

TEE OFF AGAINST AN ALPINE BACKDROP

The breath-takingly located **golf course in Scheidegg** combines relaxed golfing with a fantastic mountain panorama: the view extends from the Nagelfluhkette mountain range in the east to the "Säntis" in the west. The relatively flat course (par 70) offers a varied game over nine holes. The 300-metre-long driving range as well as generous practice greens and bunkers extend an invitation to anyone wanting to perfect their swings away from the fairway to come and train here.

www.golf-allgaeu.info



ON THE GO TOGETHER

The "**Sportalm Scheidegg**" recreational facility offers a wealth of sports and leisure activities, especially for groups: on the **high ropes course**, those who are not afraid of heights can test their limits and experience the invigorating sense of freedom at a height of more than ten metres. With around 1,000 square metres of climbing and bouldering space, the **climbing centre** offers both novices and experienced climbers diverse options. And the **indoor football hall** enables you to play soccer on synthetic turf whatever the weather and season. Whoever wants to recharge their batteries can fortify themselves in the adjacent Kässtadl restaurant or the bistro.

www.sportalm-scheidegg.de

HIKING FOR CONNOISSEURS AND SUMMITTEERS

IN HARMONY WITH NATURE

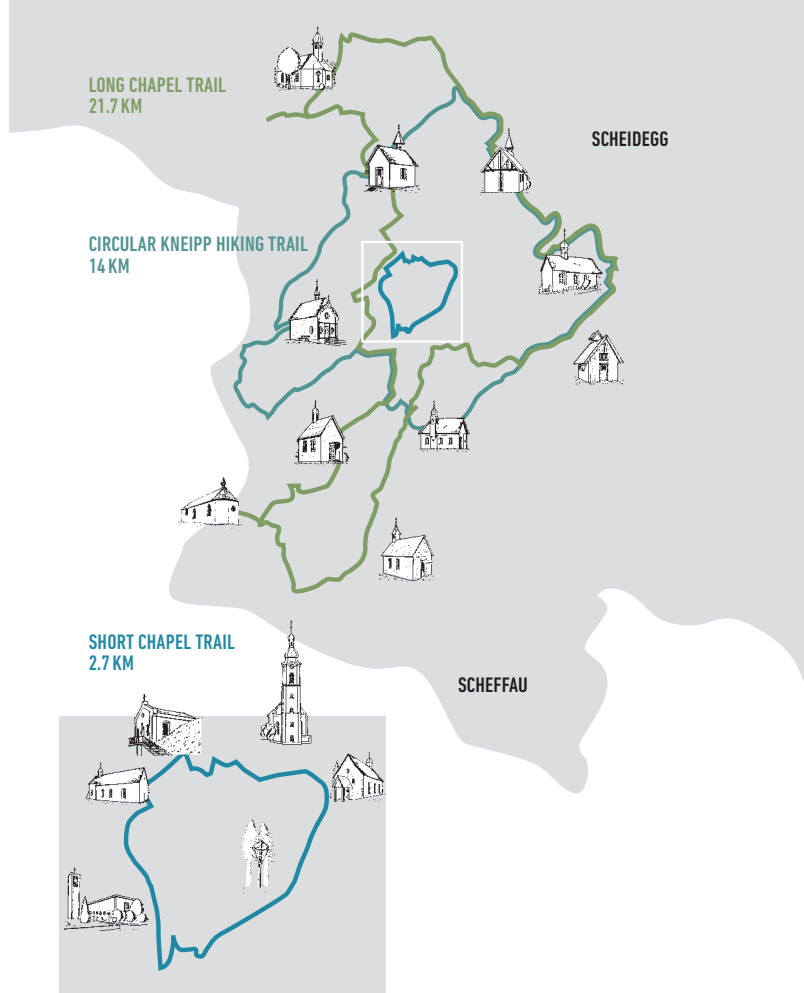
The **Allgäu hiking trilogy** is a unique long-distance hiking trail network and offers various hiking experiences over three different altitudes along three main routes. You can experience the Allgäu region in all of its diversity over a total of 876 kilometres subdivided into 54 legs. The routes are interconnected, so you can simply decide for yourself where you would like to start and end up.

EXPERIENCING AND APPRECIATING WATER

Water is omnipresent in the region around Scheidegg. The **West Allgäu waterways** show just how important water was to our forefathers and how it is used today. The trail passes by idyllic pools and romantic moors, historic mills and old sawmills or along rushing streams and thundering waterfalls.

ON TOUR WITH THE HIKING GUIDE

We offer guided hikes covering diverse themes and to various destinations throughout every season. Sometimes our trained hiking guides explore the area immediately around Scheidegg with you, and sometimes they take you to the Pfänder near Bregenz or to the peaks of the Allgäu Alps.



TRAILS FOR BODY AND SOUL

In ancient times, people wandered from spring to spring, looking for resting and grazing places for themselves and their herds. Later on, chapels that are still standing today were built at the springs. We invite you to hike from chapel to chapel along these historic trails and to visit these special gems.

The area surrounding Scheidegg boasts 13 chapels, including an interdenominational one. These chapels are linked together by a **short** and a **long** interdenominational **chapel trail**.

A TOUR TO SUIT EVERYONE: BIKE PARADISE SCHEIDEGG

THE ROUTE TO THE MOST BEAUTIFUL LOCATIONS

The **Allgäu cycling tour** takes you through the most beautiful places in the Allgäu region over 475 kilometres of mostly paved routes. The trail leads you through Bavaria, neighbouring Baden-Württemberg and Tyrol. Nine different variants of this long-distance cycling route, which has been awarded four stars by the General German Bicycle Club (ADFC), can be cycled along, offering a route with an appropriate altitude profile to suit everyone.

www.radrunde-allgaeu.de



CHEESE DELICACIES FROM THE ALPS TO LAKE CONSTANCE

Whoever wants to reveal the secret of the Allgäu region's cheese specialities by bike sets off along the **Allgäu cheese trail**. "The most wonderful cheese network in the Allgäu area" extends over 220 kilometres through the region between Oberstaufen, Scheidegg, Lindau, Wangen and Isny. www.allgauer-kaesestrasse.de



UNDERWAY NICE AND EASY WITH E-POWER

E-bike hire station

Sport Hauber in the centre of Scheidegg offers a large and varied selection of bicycles.

www.sport-hauber.de

E-bike charging station

You can charge your e-bike for free at Scheidegg's "Kurhaus": chargers for up to six e-bikes are located beneath the terrace. Charging cables are available there for all common models.



PURE RELAXATION IN THE SNOW: WINTER HOLIDAY IN SCHEIDEGG



www.scheidegg.de/winter



ACTIVELY TAKE A BREATH

Cross-country skiing is the “in” sport and strengthens the entire body. When gliding along on the narrow skis, you can enjoy the fascinating winter landscape in complete relaxation far away from the daily grind. The area around Scheidegg is a paradise for cross-country skiers, because it offers a wide choice of trails of varying difficulties – no matter whether you prefer the classic or skating style.

WINTER FAIRY TALE ON THE PFÄNDER RIDGE

The picturesque landscape reveals its most beautiful side along the **Pfänder region’s winter hiking trail**. 30 kilometres of perfectly prepared and signposted winter hiking trails lead you from Scheidegg via Möggers and Eichenberg to the 1,062-metre-high peak of the Pfänder and, from there, back down to the Fluh area above Bregenz. The route offers splendid panoramic views of the Rhine valley, the Alps and Lake Constance. On the way, numerous inns and two alpine dairies invite you to fortify yourself with regional specialities. And if your batteries are completely drained, you can just hop on the rural bus at one of its numerous stops.

SKIING COURSES FOR NOVICES AND EXPERTS

No matter whether you’re interested in skiing, snowboarding or cross-country skiing, the Haisermann skiing school offers novices and experts courses in all three disciplines. If you don’t have any skiing equipment of your own, you can hire it directly on site from Sport Hauber.

www.skischule-haisermann.de

www.sport-hauber.de

SKIING FUN FOR THE WHOLE FAMILY

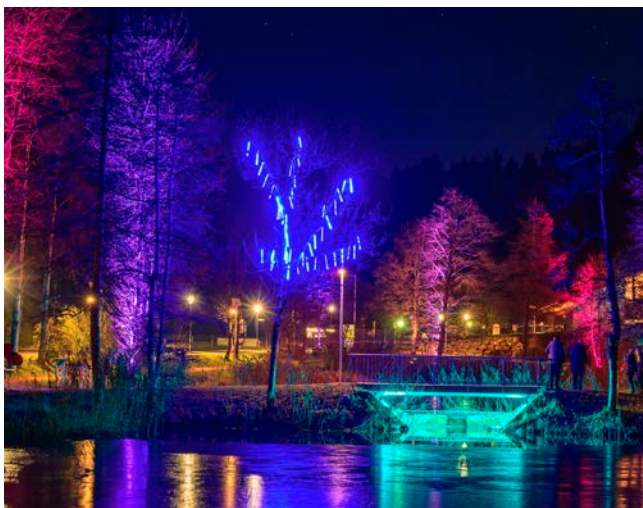
The **Luggi-Leitner lift** in Scheidegg/Möggers is ideal for learning your first moves. The 900-metre-long tow lift takes you up to a plateau at an altitude of 1,000 metres. In good snow conditions, a small halfpipe with jumps and tables is set up so that freestylers and snowboarders can strut their stuff, too. Youngsters can have a go on skis for the first time in the kids’ area, which includes a rope lift and a magic carpet.





TO BREGENZ FOREST WITH THE SKIING BUS

Boasting 109 kilometres of slopes with guaranteed snow as well as 28 lifts and cable cars, the **Damüls-Mellau** skiing area in Bregenz Forest offers pure winter sports enjoyment. From Christmas to the end of February, the skiing bus transports you in comfort from Scheidegg to the region's most beautiful skiing area – every week from Thursday to Sunday. There, you can let rip on the slopes during the day and take a relaxing bus ride back to tranquil Scheidegg in the evening.



INSIDER TIP FOR HORSE LOVERS

One winter highlight is the **skijoring and horse-drawn sleigh race** organised by Scheidegg's riding group. In skjoring, skiers are pulled along on a rope by a horse. Heavy draught horses, elegant Friesians or small teams with ponies and donkeys can all be found here. Besides exciting competitions, hot drinks, sausages and cake as well as a magnificent Alpine panorama await you at the Briegel family estate in Lindenau-Bühl.



CHRISTMAS TIME IN SCHEIDEGG

Alongside our wide variety of winter sports offers, numerous events and tourist destinations await you in the festive season to get you in the Christmas spirit: from the classic Christmas market in the centre of Scheidegg to Advent and Christmas concerts as well as the forest Christmas festivities on the "skywalk allgäu" treetop trail.

MAGICAL WINTER WALK

From the first Advent weekend to the end of February, festively decorated squares, a magical forest of lights, illuminated ice formations and the scent of gingerbread and mulled wine invite you to wander through wintry Scheidegg to Scheffau. Throughout this period, **Scheidegg's winter worlds** offer both young and old visitors numerous surprises – a lovely way to get you in the mood for Advent and the festive season.

TOURIST DESTINATIONS

The Allgäu region is one of Germany's most popular holiday destinations and attracts numerous holidaymakers each year with its unspoiled nature and varied leisure and cultural activities.



LINDAU

Lindau's lakeside promenade is widely regarded as the most wonderful on Lake Constance. Beautifully situated on an island, the charming old town captivates with its romantic alleyways and historic buildings. Since the summer of 2021, the newly opened Lindau spa has also been enticing visitors to recuperate while looking over the lake.



MAINAU ISLAND

The flower island of Mainau is one of the most popular tourist destinations on Lake Constance and offers breath-taking nature in all seasons. Not only garden lovers will find something to their taste here, but also families and visitors looking for relaxation. Fun and good cheer are guaranteed on a "Bollerwagen" handcart trip across the island or a visit to the butterfly house.



BREGENZ (A)

In Bregenz, culture is in full swing all year round. Vorarlberg's capital is particularly famous for its festival performances, which attract numerous visitors each year in July and August. Whoever would like to enjoy the view over Bregenz from above can ascend the Pfänder quickly and in comfort by cable car. The Alpine wildlife park, which is open throughout the year, is particularly worth a visit for families.



NEUSCHWANSTEIN CASTLE

King Ludwig II's world-famous and wildly romantic fairy-tale castle is one of the most popular sights in Germany. Each year, innumerable tourists from all over the world visit the castle in Hohenschwangau.



AQUARIA WATER PARK

The Aquaria water park in Oberstaufen is regarded as one of the most beautiful spa in southern Germany. With a swimmers' pool, a white-water gyro, a 100-metre slide, a saltwater pool, a children's pool, a sauna landscape and a wellness area, it offers fitness, fun and relaxation under one and the same roof.



OBERSTAUFEN MOUNTAIN WORLD

Whoever would like to discover the mountain world around Oberstaufen can quickly ascend to the peaks of the Hochgrat, Imberg and Hündle using the three mountain railways. If you're looking for action, have a go on the summer toboggan track on the Hündle or visit "Alpsee Bergwelt".



LEISURE PARKS

With its roller coasters, white-water slides, children's carousels and numerous other rides, the Skyline Park near Bad Wörishofen offers lots of fun for both young and old. A trip to "Ravensburger Spieleland" near Meckenbeuren promises plenty of adventure, excitement and action.

GUEST CARDS FOR THE REGION: ENJOY TOP-CLASS ADVANTAGES

“ALLGÄU-WALSER CARD”

On arrival, your host will provide you with your personal “Allgäu-Walser Card” free of charge, enabling you to enjoy top-class advantages in the western and upper Allgäu regions and the Kleinwalsertal valley from day one of your holiday.

www.allgaeu-walser-card.de

“VIELCARD ALLGÄU”

The “vielCARD Allgäu” allows you free admission to almost 70 attractions throughout the Allgäu region and the Kleinwalsertal valley once per period of validity. You can simply have the upgrade booked onto your “Allgäu-Walser Card” at our Scheidegg Tourism office and therefore save yourself both time and money, because the “vielCard” is used just like a ticket, enabling you to pass straight through the turnstile at mountain railways and lifts.

www.vielcard.de

“BODENSEECARD PLUS”

The “BodenseeCard Plus” enables you to pay once and obtain free admission to numerous tourist destinations such as spas, museums or mountain railways. This activity card allows you to explore the entire four-country region of Lake Constance over a period of 3 or 7 days and benefit from exclusive additional offers. The card is available from us in the Scheidegg Tourism office.

www.bodensee.eu



CULTURE IN SCHEIDEGG: ENTERTAINMENT THE WHOLE YEAR ROUND

CULTURE IN ALL OF ITS FACETS

Culture fans can enjoy a wide and varied selection of concerts and readings taking place at special event locations throughout the year in Scheidegg – from classic spa concerts in the Kneipp spa park to the Wiener Symphoniker quintet at the Theatron open air theatre

MARKETS & FESTIVALS

Wandering around markets, discovering specialities and rarities or forging new friendships at festivals: markets and festivals are in season throughout the year in Scheidegg. For example, the “Edelweiß” local history and traditional costume society offers entertainment at the legendary Allgäu village evenings on Scheidegg’s church square.

A JOURNEY BACK IN TIME

A visit to the “Heimathaus” **craftsmen’s museum** is a must for anyone interested in Scheidegg’s architecture and history. Over five floors you can dive into the past and take a look at the treasures that have been collected and restored by Scheidegg’s historical and museum society. Guided tours take place each Wednesday and every first and third Sunday in the month.



HISTORICAL CUSTOMS: HEARTY FUN AND CONVIVIALITY

PILGRIMAGE HIGH UP ON HORSEBACK

Each year on the second Sunday in October, cavalcades from the surrounding area meet up for the **St. Wendelin ride**. With their colourfully decorated horses, the riders make the pilgrimage from Scheidegg and Niederstaufer to St. Wendelin's chapel on Kinberg mountain to receive their blessing during the festive worship service – a very special event in the Allgäu region!



THE JESTERS ARE ON THE LOOSE

Every year during carnival time, the Scheidegg jesters' guild transforms the town into a **Swabian-Alemannic carnival** stronghold. On "Dirty Thursday", the jesters get ready to storm the town hall. The major carnival procession on the Sunday attracts over 3,000 masked and costumed carnivalists from throughout Upper Swabia, the Black Forest, the Lake Constance region and the Neckargäu area to Scheidegg.

WELCOMING IN THE MERRY MONTH OF MAY

As in all communities in the Allgäu area, the start of the merry month of May is celebrated in style in our region, too. The roughly 30-metre-high pole is erected during the traditional **raising of the maypole** festivities. You can experience this spectacle twice here: the celebrations in the Scheffau area on 30 April are particularly hearty, and the maypole in Scheidegg is erected on 1 Mai.

RETURN TO THE VALLEY FROM THEIR SUMMER RETREAT

The **cattle drive** is one of the highlights of the late summer in the Allgäu region. This is when the cattle return from the Alps to the mustering point in the valley, where they are handed over to their owners. The animals are decked out festively for their traditional return from their summer pastures and the end of the summer on the mountains is celebrated together – a wonderful spectacle that attracts numerous visitors every year. The cattle drives in Maierhöfen and Oberstaufer are especially popular.



ALLGÄU ENJOYMENT AND DIVERSE DELICACIES

Numerous restaurants and inns offer our guests typical specialities from around the region – down-to-earth, with seasonal ingredients and wonderfully hearty at times. No matter whether you give “Kässpätzlen”, “Krautkräpfen”, a delicious snack of bread and cold cuts or a tasty Allgäu beer a try, you can enjoy the Allgäu region with every fibre of your being here. But you can also treat yourself to some international cuisine here at the Italian restaurant of your choice, a quick snack in the bistro or in one of our beautiful cafés.



CULINARY EVENTS

The Scheidegg/Möggers landlords' association offers a varied programme throughout the year. It ranges from the popular Scheidegg “cheese weeks” in February and the “innkeepers' platter” campaign in July to the “game weeks” in October.



www.scheidegg.de/veranstaltungen

ON THE TRAIL OF CHEESE

The **Allgäu cheese trail** is devoted entirely to enjoyment. Extending to 220 kilometres, this tourist route takes you through various holiday locations in the western Allgäu region and past 13 alpine hay milk dairies and five farm cheese dairies. Here, you can try out regional cheese specialities, see how they are produced during a guided tour around an alpine dairy and allow yourself to be pampered with tasty delicacies in the local inns. No matter whether you are travelling by car, by bike or on foot, a trip along the Allgäu cheese trail is a culinary experience.

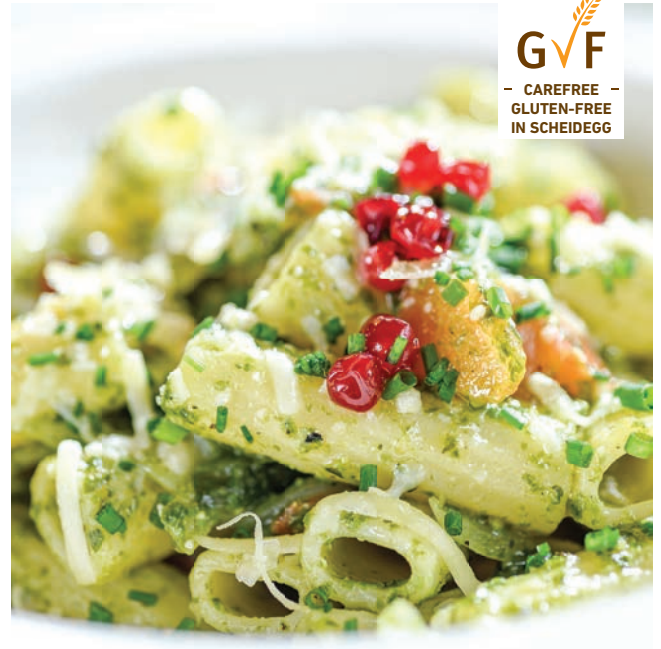
www.allgauer-kaesestrasse.de

BÖSERSCHIEDDEGG VILLAGE ALPINE DAIRY

Would you like to know how the holes get into the cheese? Then pay a visit to the alpine dairy in the village of Börserscheidegg with our hiking guides, because there's hardly anyone in the region who knows more about Allgäu cheese than them. Here, children and adults can find out what makes Allgäu cheese so special during the **“cheese and cows” alpine dairy tour** – and you can have a try, too, of course. A farm is then visited to find out where the milk for the delicious cheese actually comes from.

www.kaeserei-boerserscheidegg.de

GLUTEN-FREE ENJOYMENT: CAREFREE HOLIDAYS



GVF
- CAREFREE -
- GLUTEN-FREE -
IN SCHEIDEGG

GLUTEN-FREE IN SCHEIDEGG

Relaxed holidays and enjoyment despite coeliac disease? That's not a problem here in Scheidegg. We have developed the "Gluten-free in Scheidegg" programme to enable people suffering from coeliac disease or gluten intolerance to have an enjoyable and varied stay.

Certified service providers are aware of this issue and cater to your needs: restaurants, hotels and cafés offer gluten-free dishes. Holiday residences offer additional uncontaminated equipment such as crockery, cutlery or toasters. A range of gluten-free flour mixes and baking ingredients is available from the Val & Pri Store, where you can also enjoy Jessica Reiniger's gluten-free baked creations – including hearty snacks and sweet goodies. Gluten-free baking courses and live events also take place there on a regular basis.

TIP

"Glutenfrei in Scheidegg" (gluten-free in Scheidegg) brochure

An overview of restaurants, hotels, guesthouses and holiday apartments with gluten-free offers as well as shopping options, event tips and lots of additional useful information is provided in our "Glutenfrei in Scheidegg" (gluten-free in Scheidegg) brochure, which can also be downloaded at:

www.scheidegg.de/glutenfrei

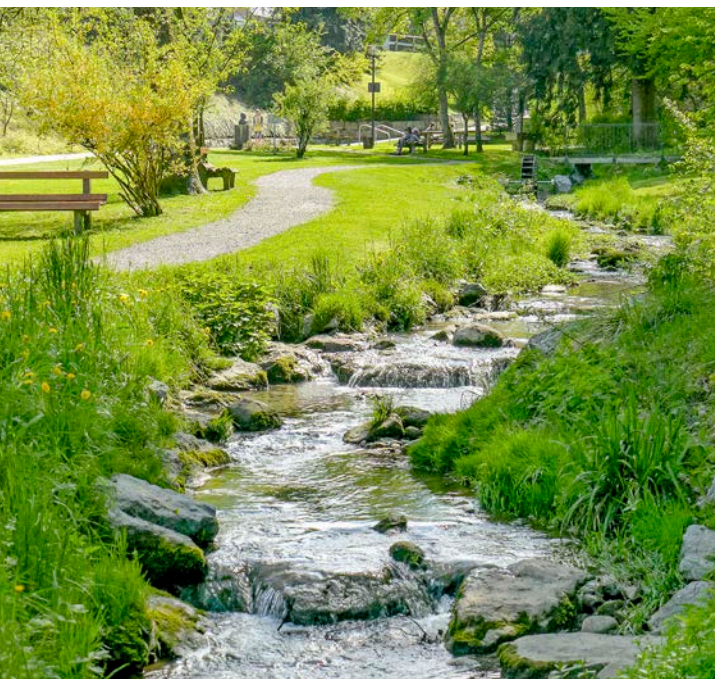
BODY AND MIND IN BALANCE: HIKING AND KNEIPP IN AN AWARD-WINNING CLIMATE

THE FIVE PILLARS OF HEALTH

Over 120 years ago, Sebastian Kneipp already knew that nature is the best pharmacy". The Kneipp health cure, a holistic natural medicine method built on the following five pillars, is based on his findings:

1. Water therapy, 2. Exercise therapy, 3. Nutritional therapy,
4. Medicinal plant therapy, 5. Regulative therapy

As one of ten "premium-class Kneipp" health resorts in Germany, we abide by this philosophy and offer diverse applications that harmonise the cardiovascular system and the metabolism and boost your mental well-being.



RECUPERATION IN THE FRESH AIR

Scheidegg is exactly the right place for a wellness holiday that does your health the power of good. As the most westerly health resort in the Allgäu region, our community is situated in a climatically beneficial location between Lake Constance and the mountains and boasts outstanding environmental and air quality.

We have been awarded the title of **premium-class climatic health resort** for this.

Recuperation in clean, low-allergen air is particularly important for children with health problems. Of course, there's no lack of fun to be had either, because there are numerous exciting leisure activities for the whole family just waiting to be discovered here.



Subject to change without notice. Printed in Germany. 12-2022 © werbeagentur-neubert.de

SCHEIDEGG TOURISM

Rathausplatz 8, D-88175 Scheidegg im Allgäu
Telephone +49 8381 89422-33, telefax +49 8381 89422-30
info@scheidegg.de, www.scheidegg.de